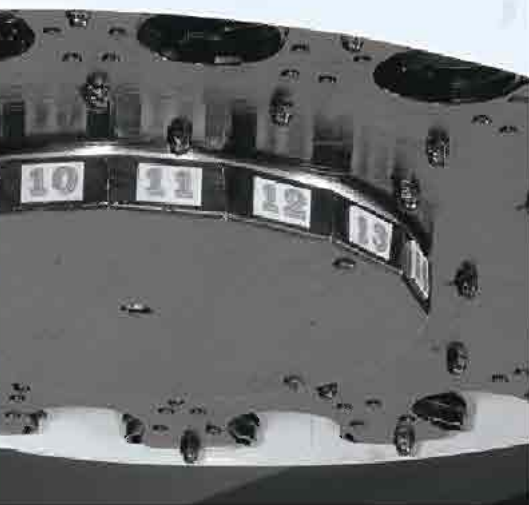




# ***DUGARD*** ***EAGLE 760*** ***Vertical Machining Centre***

**High Speed !**  
**High Accuracy !**



Maximise Productivity and Profits  
with the Proven EAGLE 760





# Superior And Dependable

- Fanuc OiMC control or Fagor 8055-i
- 900 x 410 mm precision fully ground work table with 4 T-slot
- High speed linear ways on 3 axes
- Precision ground ball screws
- Heavy duty fully enclosed guarding compliant with CE regulations
- Fully enclosed splash guard
- Rigidly designed base and column structure for added stability
- Wash down device
- ISO 40 spindle (BT, CAT, DIN)
- 16-station carousel type ATC
- Telescopic side way covers for X and Y axes
- Automatic lubrication
- 8000 RPM rigid spindle
- Low voltage circuit system
- CE declaration

## Vertical Machining

Value in Capacity  
and Reliability



Centre

## ISO 40, 8000 RPM High Rigidity Precision Spindle

The spindle is supported by class 7 (p4) angular contact ball bearings, ensuring high axial thrust and radial loads.

Spindle drive motor is equipped with electronic braking.

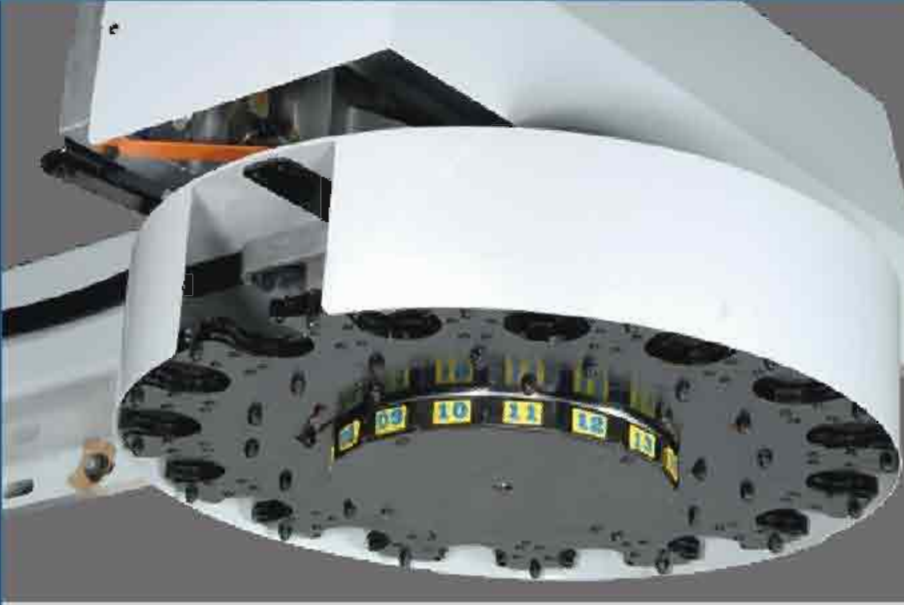


# New Base and Column Design to Optimise Structural Rigidity and Stability

The major parts of the machine are constructed of high quality cast iron (FC-30), scientifically rib reinforced and stress relieved for maximum strength and improved vibration absorbing features.

In order to enhance the rigidity of the structure, the column and machine base are box type design obtained from the results of finite element analysis.





### Fast, Smooth 16-Station Carousel Type Magazine

The carousel type magazine accommodates 16 tools with a choice of CAT 40/ BT40/ DIN 69871 to choose from. The magazine features bi-directional random tool selection for efficient tool changing.

### Quick, Positive Tool Release

The large diameter cylinder provides quick and positive tool releasing.

# Choice of Digital Controls

Each control exhibits user-friendly operation and advanced functions to boost your productivity.

## Fanuc OiMC

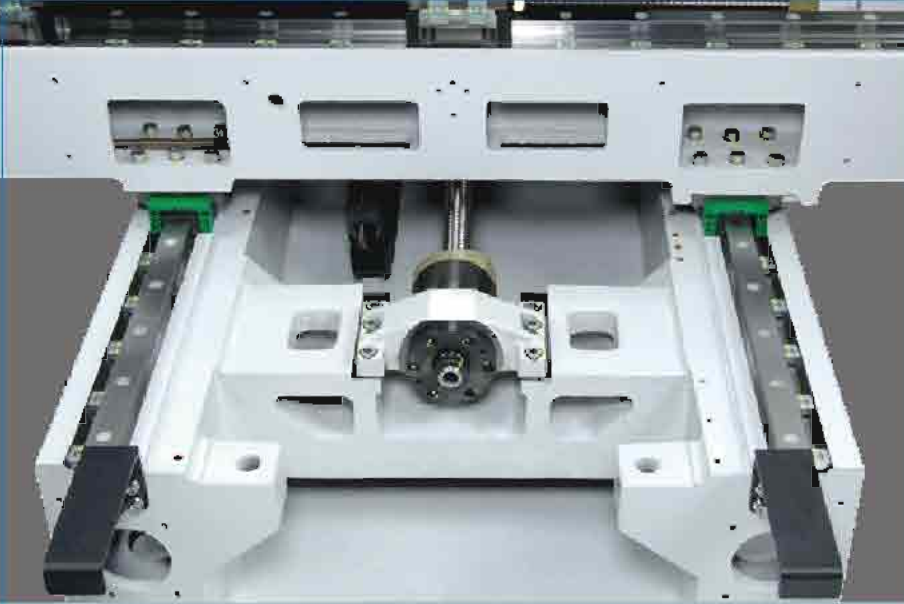


- Biggest selling control in the history of CNC 9" mono chrome screen , 320 M memory
- Fully digital drive package

## Fagor CNC 8055-ε



- Up to 1Mb of user RAM memory
- Compact flash of up to 2Gb (optional) with flash memory to store user programs, OEM programs, PLC programs, customizing programs, parameter tables, etc
- USB connector for backup of programs, parameters and tables
- Ethernet (optional) TCP-IP protocol



### High Speed and Rigid Linear Ways on X/Y/Z Axis

- Linear ways on three axes with 35 mm width for added stability
- Z axis utilises extra long bearing blocks for increased rigidity of spindle head
- Linear ways allow rapid traverse rates up to 24 M/min to meet high speed machining requirement



### High Precision Ball screws on Three Axes

The X, Y, Z Axes employ class C3 ball screws. Precise pre-tension is applied to the ball screws. Both backlash and pitch errors are compensated by laser calibration equipment.

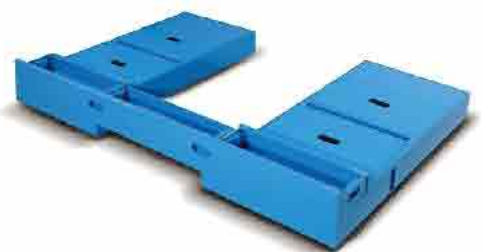
### Direct-Drive Ball screws

The ball screws on X, Y, Z Axes are directly driven by servo motors, which eliminates backlash problems while providing positive transmission performance.



### Wash Down Device

This machine is equipped with a high pressure chip flushing device, ensuring a clean interior of the machine at all time.

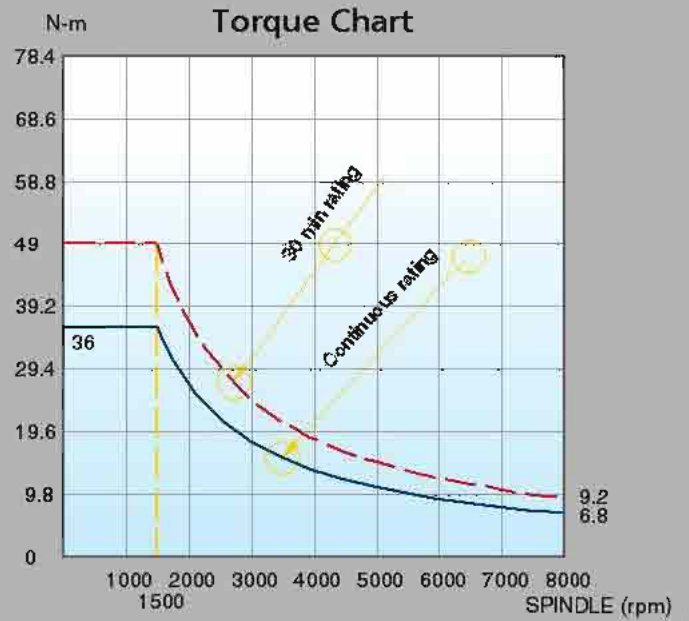
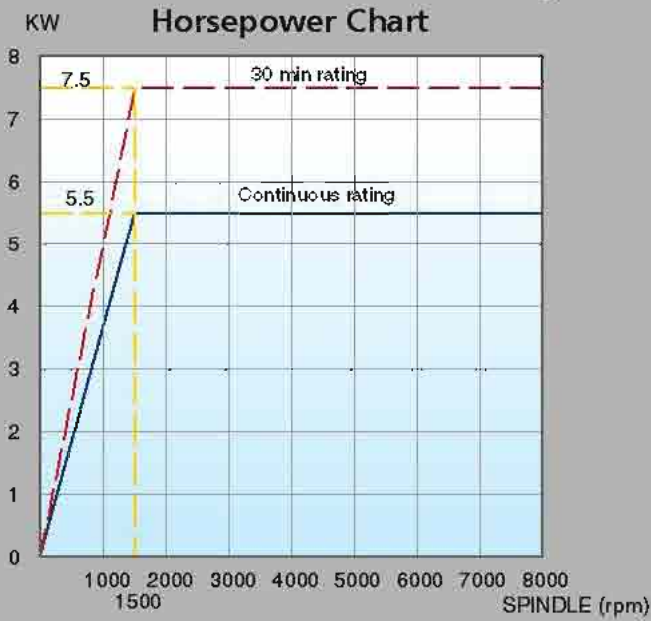


### Large Capacity Coolant Tank

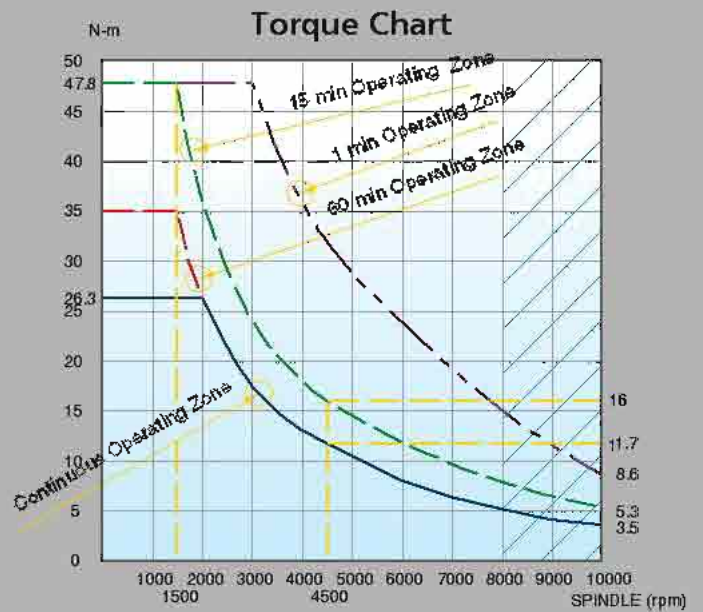
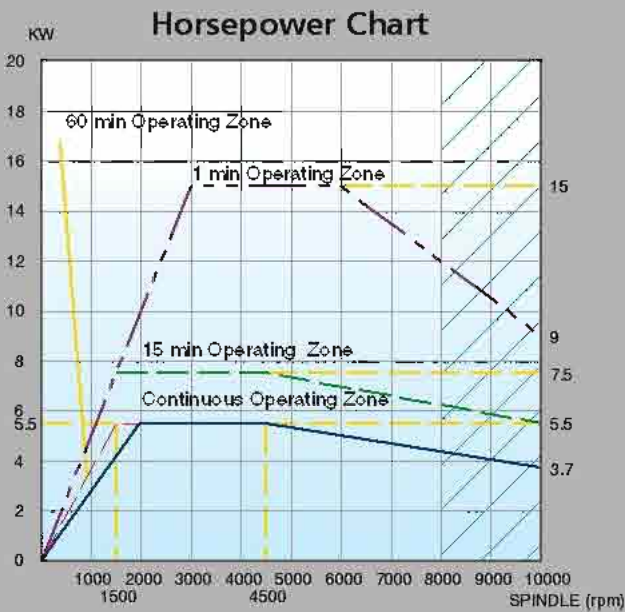
The large capacity coolant tank is equipped with wheels, providing convenient moving for cleaning.

# Spindle Motor Output

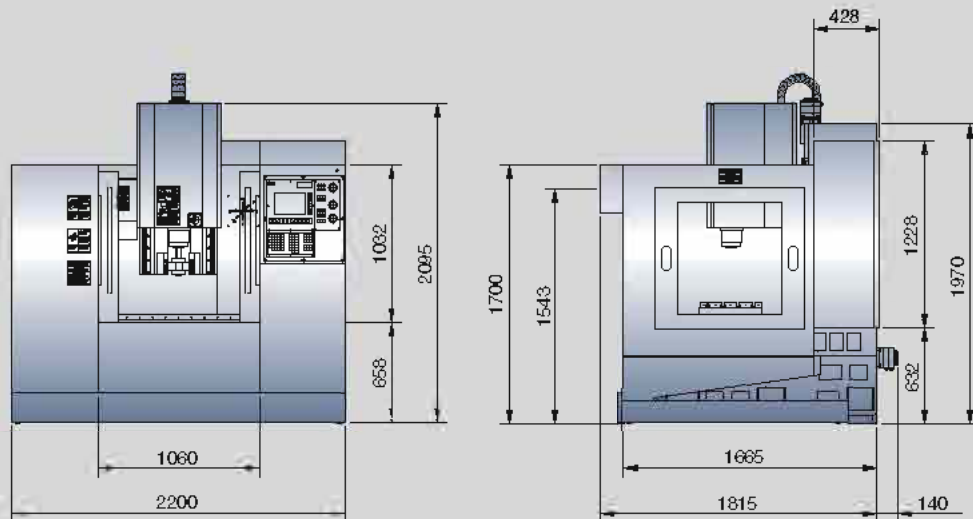
## Fagor CNC 8055-i



## Fanuc OiMC



# Dimensional Drawings



## SPECIFICATIONS

Model	Unit	MM-430
<b>Table</b>		
Table size	mm	900 x 410
Distance between table & floor	mm	820
Table loading capacity	kg	350
Table configuration	mm	16mm x 4 x 100mm
<b>Travel</b>		
X axis	mm	760
Y axis	mm	430
Z axis	mm	460
<b>Spindle</b>		
Taper	ISO	40
Spindle bearing inside diameter	mm	60
Spindle speed	rpm	8000
Spindle center to linear guide way	mm	480
Spindle nose to table top	mm	102 - 562
<b>Ball screw</b>		
X axis	mm	Dia. 32 x P8
Y axis	mm	Dia. 32 x P8
Z axis	mm	Dia. 32 x P8
Linear way (ball) - X/Y/Z axes	mm	35
<b>Motor</b>		
Spindle	kw	5.5/7.5
X axis	Nm	2.84
Y axis	Nm	2.84
Z axis	Nm	8.34
Coolant pump	kw	0.2
<b>ATC (opt.)</b>		
Pocket		16
Tool taper		BT#40 / CAT#40 / DIN69871
Max. tool weight	kg	5.4
Max. tool diameter	mm	89
<b>Performance</b>		
Rapid traverse	m/min	24
Positioning accuracy	mm	+/- 0.005
Repeatability	mm	+/- 0.005

• The above specifications are subject to change without prior notice.

### Standard accessories:

- CNC Controller
- ISO 40 spindle (BT, CAT, DIN)
- 8000rpm spindle speed
- One each piece cast iron base & column
- Easy setup and operation
- Coordinate rotation, Scaling, Mirror Image
- 16 Tools carousel type ATC
- Fully enclosed guarding
- Wash down system
- 210 l coolant tank for full enclosure guard machine
- Work light
- Rigid tapping

## European Headquarters for Eagle CNC Machine Tools

Tele: +44 (0)1273 732286 - Fax: +44 (0)1273 203835

75 Old Shoreham Road, Hove, Sussex, BN3 7BX UK  
[www.dugard.com](http://www.dugard.com) email: [info@dugard.co.uk](mailto:info@dugard.co.uk)

