

101010101
101110101
001011011



DUGARD

EAGLE 450-XP
450-XP+



High Speed Compact Machining Centre

EAGLE 450-XP

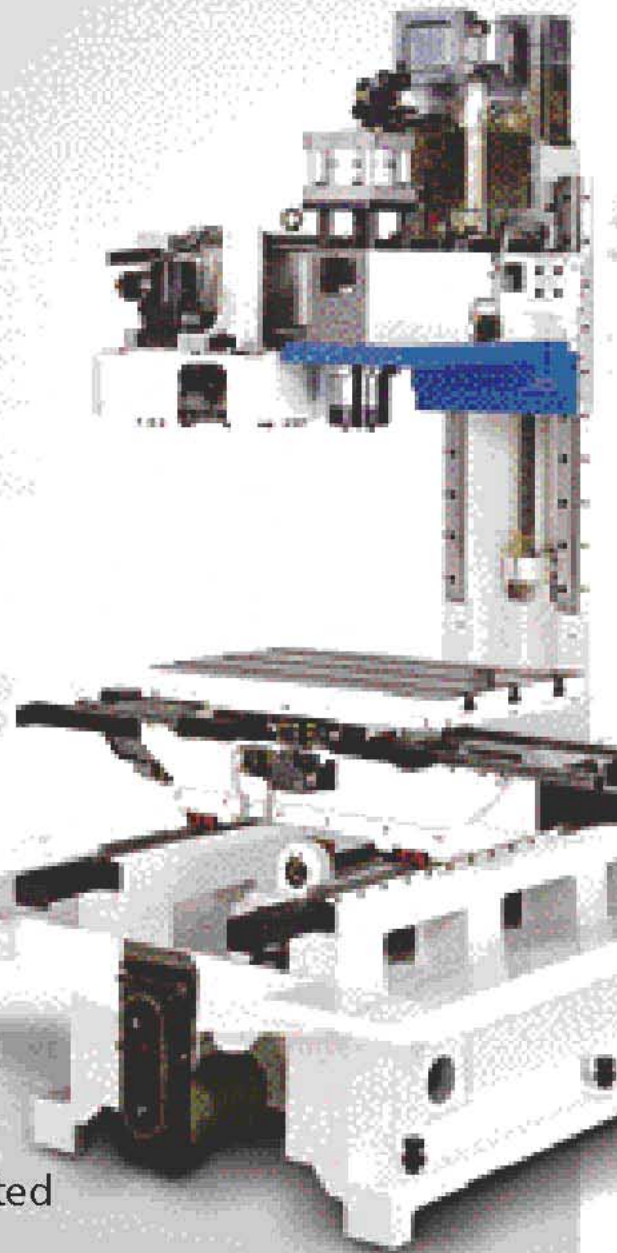
Compact

High Speed ... *Affordable*

**EAGLE 450-XP
A Compact VMC
with Professional Features**

If you are looking for a VMC that will offer high speed machining combined with precision accuracy and at an affordable price, then look into the EAGLE 450-XP. It provides 450 x 350 x 380 mm X,Y,Z axis travel and 36m/min. rapid traverse on all three axes, equipped with a 12-station carousel type auto tool changer. The compactly constructed 450-XP integrates the same precision, quality and features which are usually found in heavy duty VMCs.

**8.5kw 8,000rpm (opt. 10000,12000,15000rpm)
X, Y, Z Rapids 36m/min**



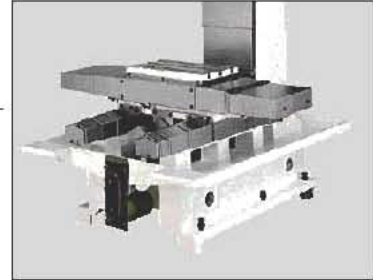
Machining

Available in two versions. BT40 for heavier applications and BT30 for high speed milling, drilling and tapping.



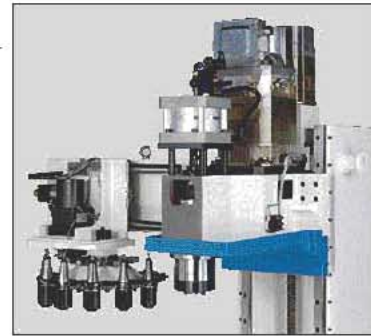
Heavy Cast Construction Weight 2200 KG

Ribbed Mehanite casting for superb rigidity, weight 2200 kg with maximum width between slide ways and extremely small footprint.



ATC

12 station carousel type ultra reliable auto tool changer.



Chip Management System(STD)

Powerful chip flushing system combined with screw type conveyor removes chips to the rear of the machine keeping downtime for cleaning to a minimum.



36 m/min , Rapid Traverse

Rapid traverse on all three axes up to 36m/min. Slide ways and ball screws are greased for life to be environmentally friendly and maintenance free.



EAGLE

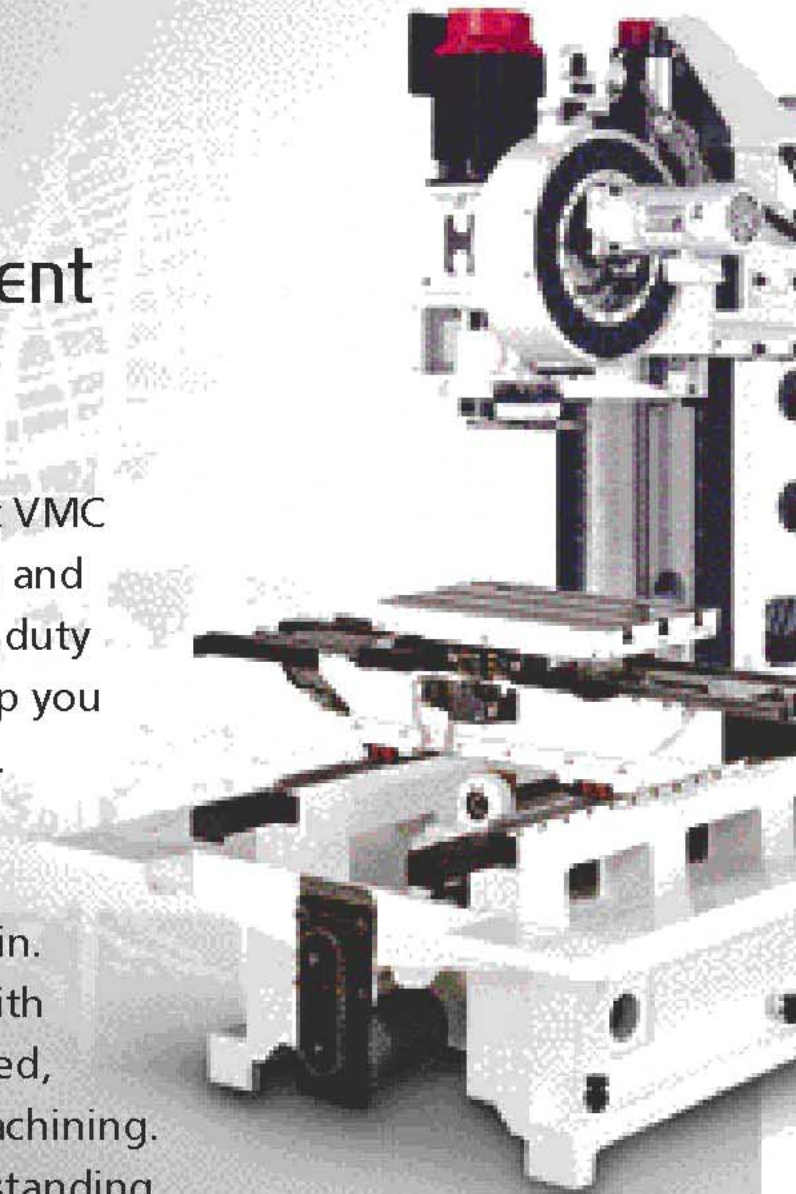
450-XP+

EAGLE 450-XP+

Built for More Efficient Part Machining

The EAGLE 450-XP+ is a compact VMC that offers the same fine features and craftsmanship as that on a heavy duty VMC. This excellent VMC will help you to machine parts more efficiently.

Designed with high speed and lifetime accuracy in mind, the EAGLE 450-XP+ features 36 m/min. rapids on three axes combined with standard 15,000 rpm spindle speed, making it ideal for high speed machining. Rugged construction assures outstanding stability during high speed machining.



Directly Mounted Precision Spindle

This is a patented ATC and spindle design for fast tool change and high spindle speed. Spindle is supported by 4pcs angular contact ball bearings mounted at 15° angle for increased rigidity and high speed machining accuracy.

The DBB type configuration increases torque capability. Spindle bearings have been properly preloaded for obtaining the utmost rigidity of the spindle, and minimum temperature generation during operation, giving increased bearing life. Spindle and spindle motor are directly mounted to eliminate noise and reduce vibration during high speed operation.



Choice of Standard Control

Fanuc Oi Control

- Industry standard G code programming
- Biggest selling control in the history of CNC
- 7.2" LCD screen, 320 M memory
- Fully digital drive package.



Siemens 802D Control

- 8.5kw spindle drive.
- 10.4" colour TFT screen with graphic display.
- G Code programming with menu support cycles. 640M Memory.
- Fully digital high power servo drive package.

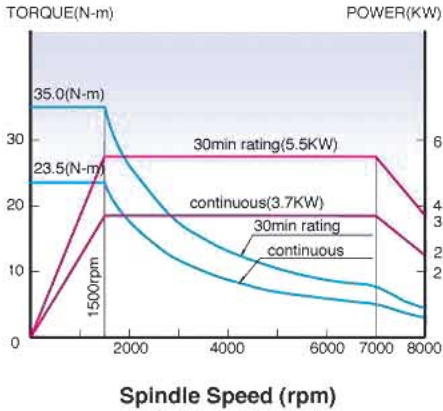


Spindle Motor

EAGLE 450-XP

FANUC

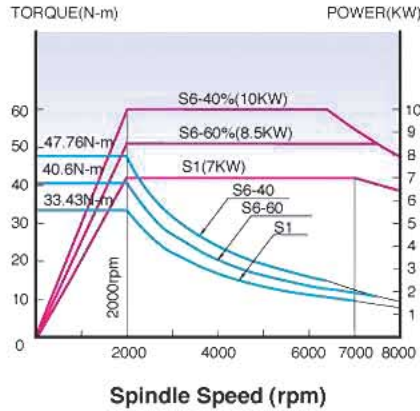
5.5kw AC Spindle Motor



EAGLE 450-XP

SIEMENS

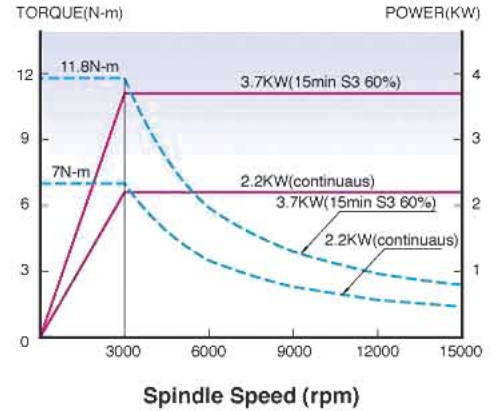
8.5kw AC Spindle Motor



EAGLE 450-XP+

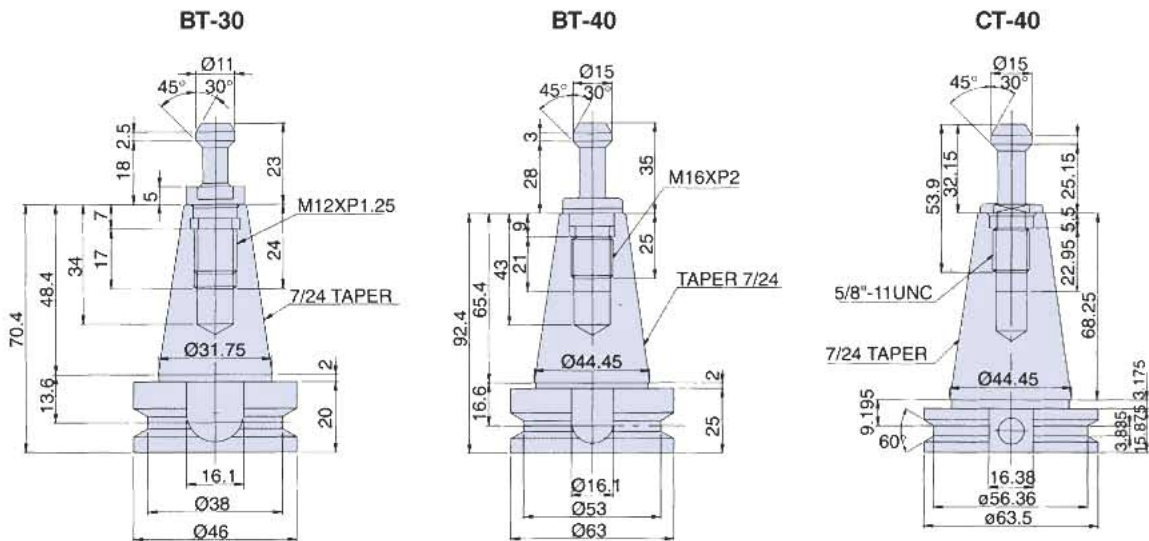
FANUC

Spindle Motor (α 2/15000)



Tool Shank & Pull Stud

unit:mm



Standard Accessories

1. 12-station carousel ATC (STD Mini Mill 450)
2. 16-station twin arm ATC (STD Kwik Mill 450)
3. Pull studs BT30
4. Pull studs BT40 or CT40
5. Coolant system
6. Fully enclosed splash guard
5. Work light
7. Grease lubrication system
8. Status beacon
9. Spindle air blast
10. Screw type chip conveyor and bucket
11. Tool kit
12. Leveling bolts & pads
13. Operator and maintenance service manuals.
14. Rigid tapping
15. Heat exchanger for electric cabinet
16. Automatic chip flushing system

Optional Accessories

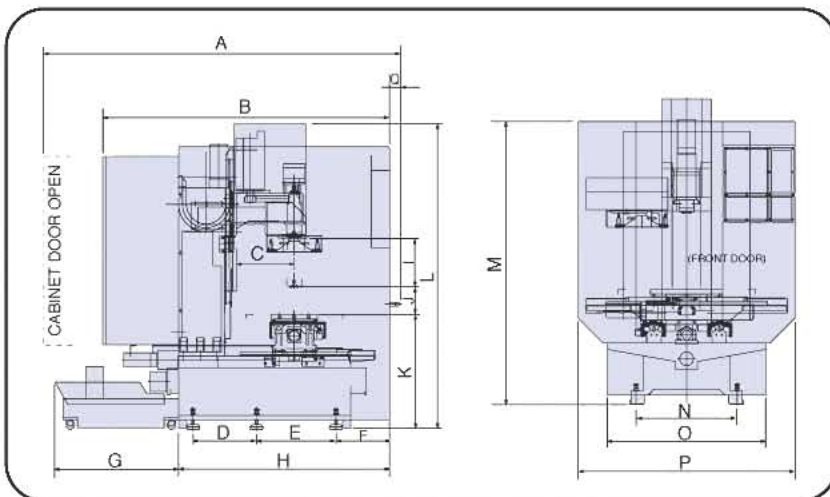
1. 10000rpm, 12000rpm or 15000rpm spindle
2. 4th axis package
3. Automatic tool length measurement
4. Spindle probe system

Specifications

MODEL	EAGLE 450-XP+		EAGLE 450-XP	
DESCRIPTION	#30	#30	#40	#40
Table				
Table Size	700 x 320mm		700 x 320mm	
T-slots (no. x wid x dis)	3 x 14mm x 100mm		3 x 14mm x 100mm	
Table Load	150kg		150kg	
Travel				
X Travel	450mm		450mm	
Y Travel	350mm		350mm	
Z Travel	380mm		380mm	
Spindle				
Spindle Nose to Table	150-530mm	150~530mm	135~515mm	
Spindle Center to Column	400mm	430mm		
Spindle Taper	#30	# 30	# 40	
Spindle Speed	150-15000rpm(opt.12000rpm)	80~8000rpm(opt. 12000,15000rpm)	80~8000rpm(opt. 10000rpm) /12000rpm	
Feedrates				
Rapid on(X/Y/Z)Axes	36/36/36m/min		36/36/36m/min	
Cutting Feedrate	1-10000mm/min		1~10000mm/min	
Accuracy				
Positioning	±0.005mm		±0.005mm	
Repeatability	±0.003mm		±0.003mm	
Tool Changer				
Tool Capacity	16		12	
Tool Shank	BT-30	BT30	BT40 or CT40	
Tool Change time	T-T: 0.8sec, C-C: 2sec		T-T:6sec, C-C:10sec	
Magazine type	Twin Arm		Carousel	
Pull Stud	P30T-1		JMBTA Standard 45°	
Max. Tool Diameter With Neighbor Tool	60mm	76mm	100mm	
Max. Tool Weight	2kg	3kg	5kg	
Motor				
Spindle Motor Digital	3.7kW(15min), Opt.5.6kW(30min)		FANUC : 5.5kW / SIEMENS : 8.5kW(S6-60%)	
Drive Motor X, Y, Z Digital	X, Y : 0.9kW, Z : 1.4kW		X,Y : 0.9kW, Z : 1.4kW	
Coolant Pump	0.38kW		0.38kW	
General				
Power Required	10KVA		10KVA	
Air Required	5kg/cm², 200L/min		5kg/cm², 200L/min	
Floor Space (L x W x H)	2450x 1550 x 2200mm		2450 x 1550 x 2200mm	
Machine Weight (approx.)	2200kg		2200kg	

ΣSpecifications are subject to change without prior notice.

Machine Dimensions



A	2470mm
B	1985mm
C	427mm
D	440mm
E	550mm
F	370mm
G	855mm
H	1460mm
I	380mm
J	BT30 : 150mm BT40/CT40 : 135mm
K	795mm
L	2110mm
M	1955mm
N	700mm
O	1098mm
P	1550mm
Q	70mm

Other Eagle Products



EAGLE - 100



EAGLE - 400



EAGLE - 1000



EAGLE - 25

European Headquarters for Eagle CNC Machine Tools



Tele: +44 (0)1273 732286 - Fax: +44 (0)1273 203835

75 Old Shoreham Road, Hove, Sussex, BN3 7BX UK

www.dugard.com

email: info@dugard.co.uk